



How to Install Accordion Shutters!

Wall to Wall Application:

- 1) Install top track flange approximately 3 3/4" above day light and center evenly over opening and level.



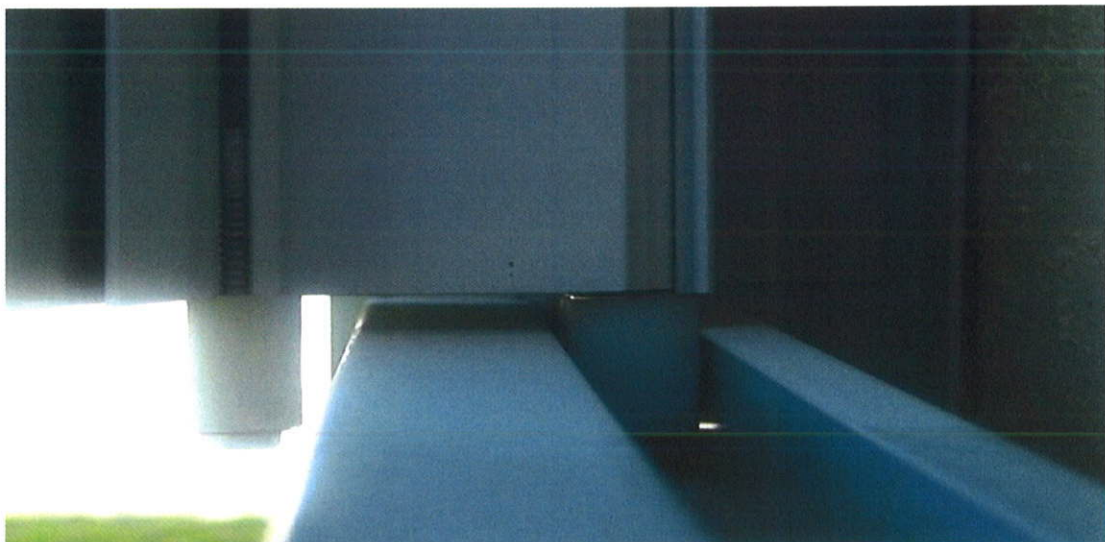
- 2) Install one side angle and level from the end of the top track.



- 3) Install blades by sliding wheels in through the open end, opposite the angle.



- 4) Install bottom track with $\frac{1}{4}$ " clearance between the shutter blades and bottom track.

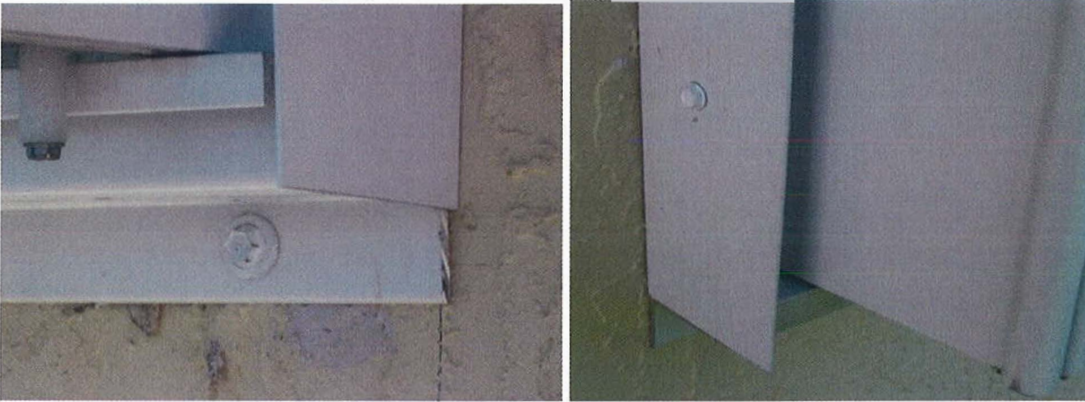


5) Install the other side angle.



6) Make sure accordion stack is completely open and tightly stacked before attaching the accordion starter to the angle with #10 x 3/4 tech screws.

Below: By using a 1 x 2 1/2" angle you conceal the exposed end of the top and bottom track.



Below: Application with 1x1 side angles. The starter can be installed on the inside or on the outside of the angle.



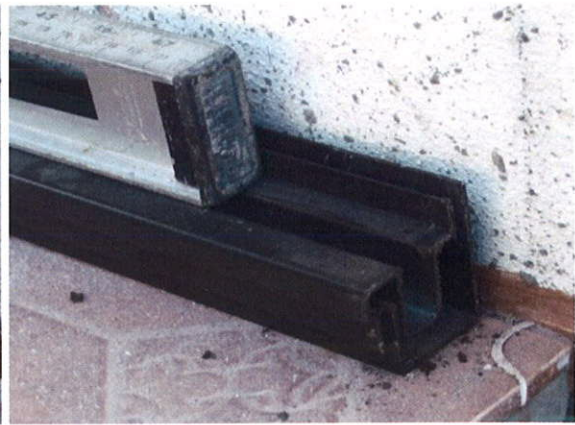
7) Close accordion and check that the shutter locks.



Wall to Floor Application:

1.) Always install bottom track first.

Below: Adjustable track is a two piece track – Install the U piece of the track first, then level and screw the top section to the U piece.



Below: Walkover track. Must use flat headed tapcons so they do not interfere with bushings when closing shutter. If making removable you must use the round head truss bolts.



2.) Install top track above day light opening evenly over window and level. Measure stacking and place accordingly if stacks are unequal.



3.) Install one side angle and level from the end of the top track.



- 4.) Install blades by sliding wheels in through the open end, opposite the angle.
- 5.) Install the other side angle.
- 6.) Close accordion and check that the shutter locks.

